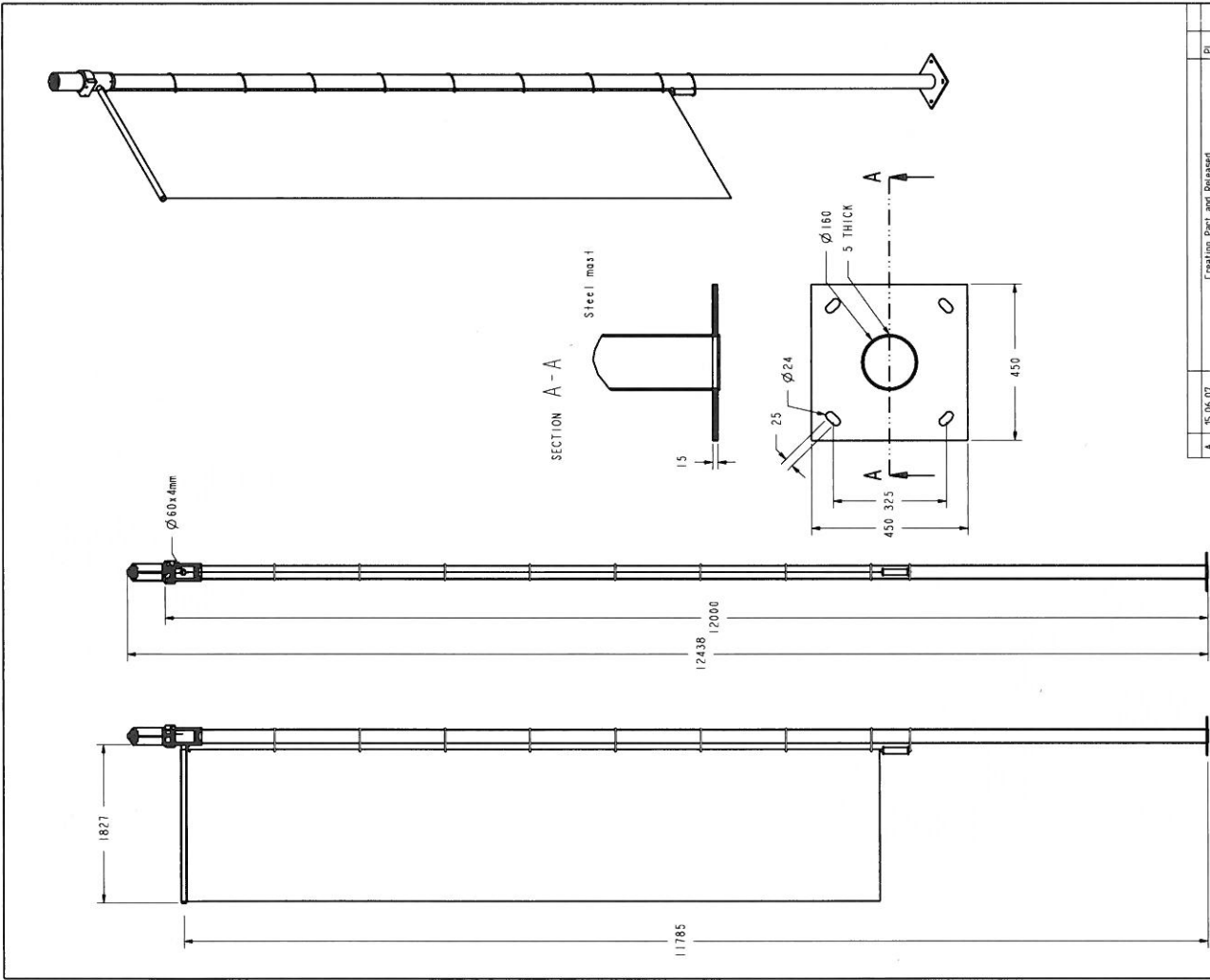


- AS** Asphalte / Asfalt
- Façade** Frise en granit blanc et bleu au motif
Frises in witte en blauwe granit volgens wandelingen
- VEGETATION**
 -  Arbre à planter
Te planten boom
- DIVERS**
 -  Entrée piétonne importante
Belangrijke voetgangersingang
 -  Garage
Garage
 -  Sens de circulation
Rijrichting
- DRAPEAUX-VLAGGEN**
 -  7.9M
 -  6.2M
 -  5.2M
 -  4.2M
- CABLAGE**
 -  Armoires de rue
 -  Câble électrique multi-brins
LEDs 20W max par mât

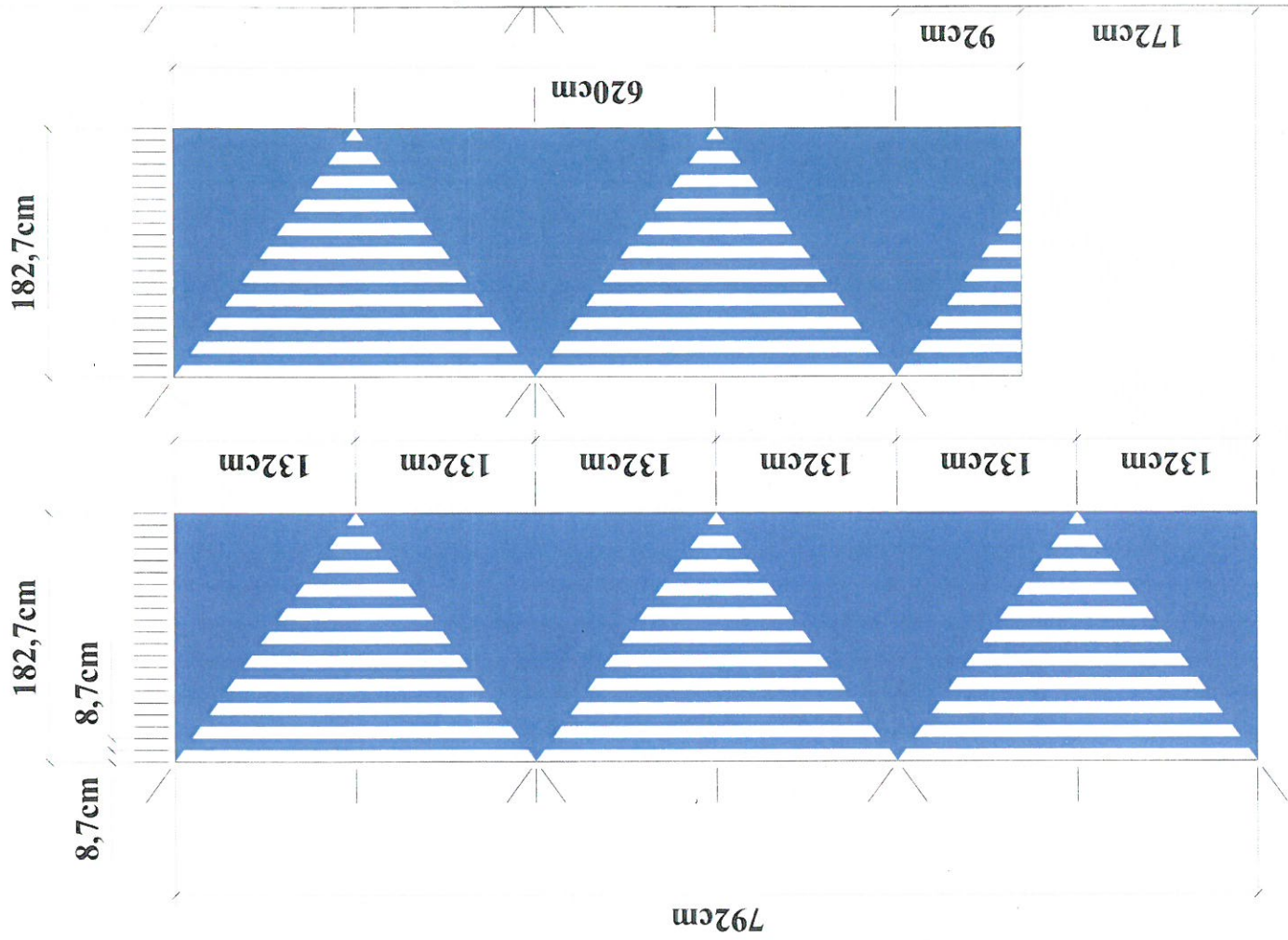


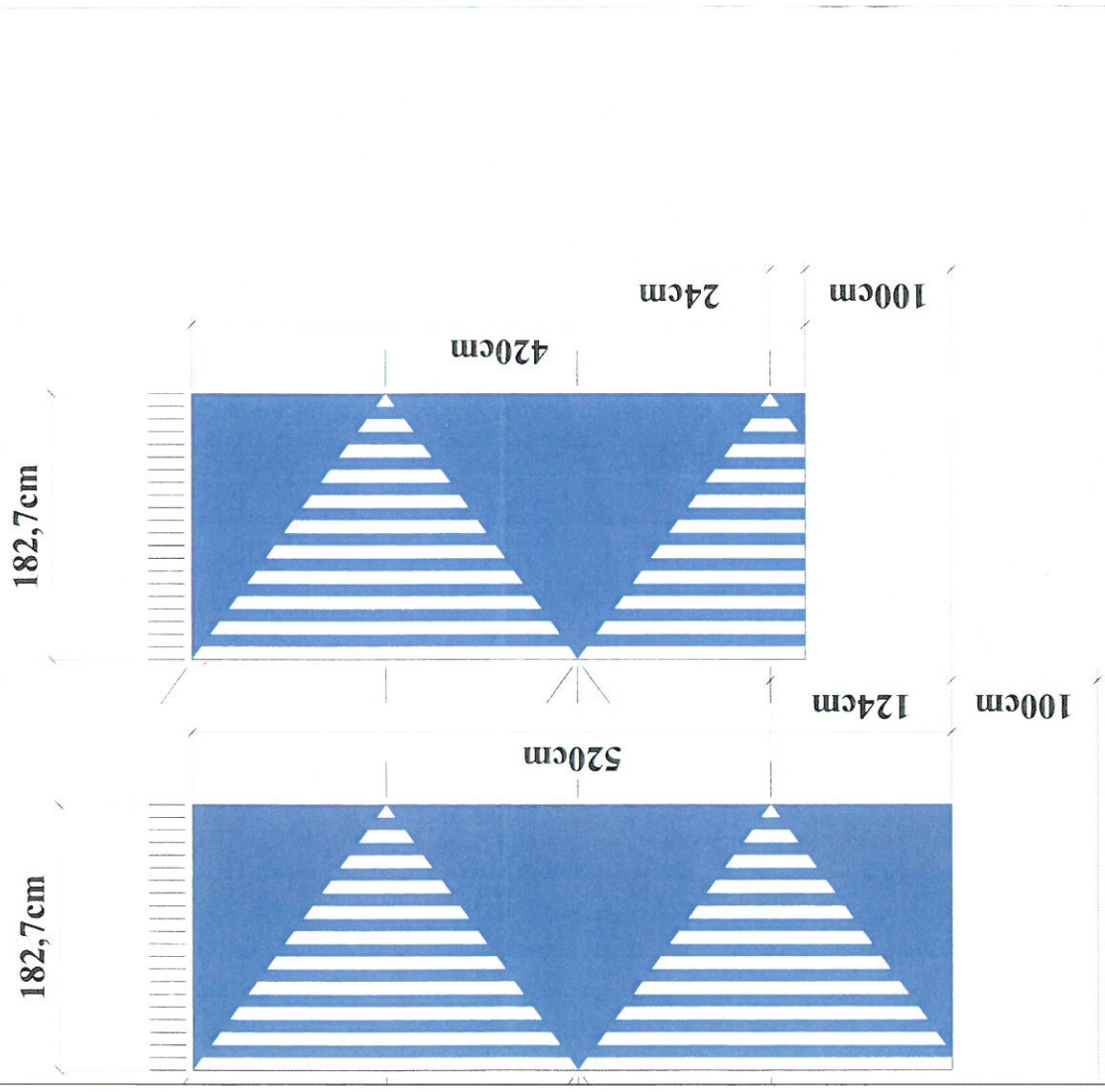
REV.	A	15.06.07	Date	Creation Part and Released	PL
				Modification	Drawn: Jäger
				Project Name	Project Nr. 970004
				Product Nr.	Gerätekosten
				Description	Pole with rotating arm
				Material	Steel ST37
				Finishing	Galvanized - powdercoating duplex system EPDM37
				Remarks	DN 700 - mast
				Drawn	1/10 1 of 2
				Checked	2007
				Approved	970004-300
				Project	
				Scale	
				Sheet	



Urbis
 Division of
 Urbis Group

Urbis Group
 Division of
 Urbis Group
 All dimensions are in mm
 Drawing: 970004-300
 Date: 15.06.07
 Scale: 1:10
 Sheet: 1 of 2





Ebauche du rendu final du drapé des mâts
 JNC international pour Daniel Buren - 07 juillet 2008 - 1/25eme

0 20 50 100 200 300 400 500 cm